



CONSULTANTS

NOT RELEASED FOR
CONSTRUCTION

1920 ANNWICKS DR.
Marietta, GA 30062

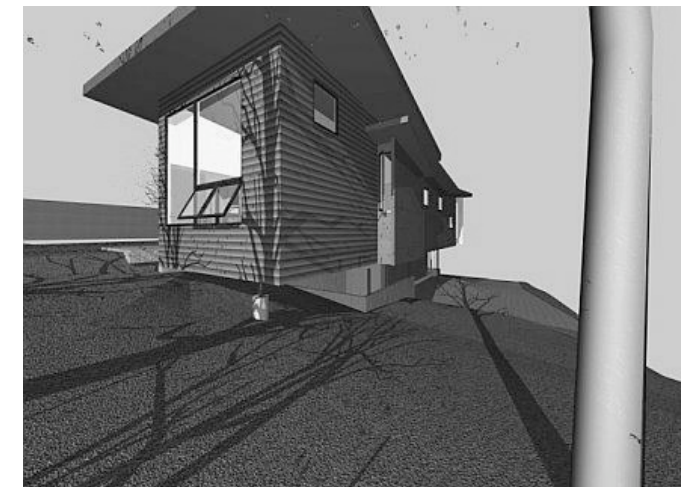
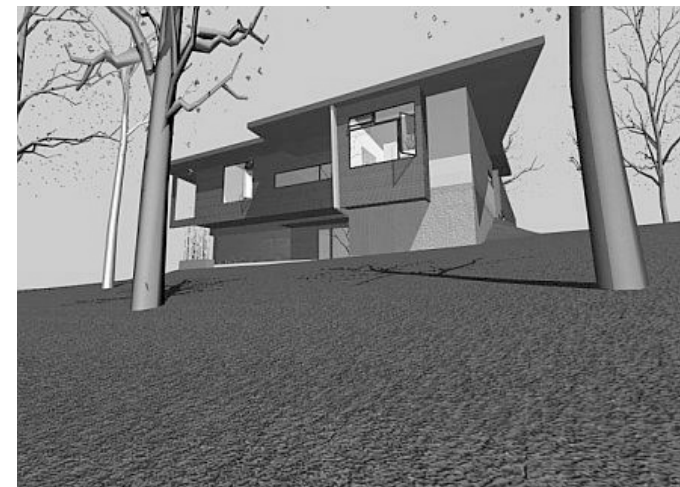
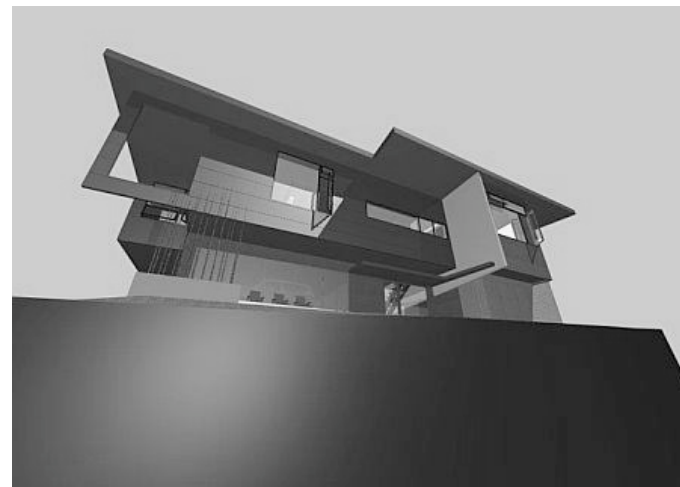
LOT 3 BLOCK "F" OF:
WICKS LAKE SUBDIVISION-UNIT TWO
LAND LOT 765
DISTRICT 16TH - SECTION 2ND
COBB COUNTY, GEORGIA

DATE	DESCRIPTION
08/29/08	PROGRESS SET
08/05/08	WICKS LAKE SUBMITTAL

COPYRIGHT

SHEET TITLE
COVER SHEET

G-001





CONSULTANTS

NOT RELEASED FOR CONSTRUCTION

1920 ANNWICKS DR.
Marietta, GA 30062

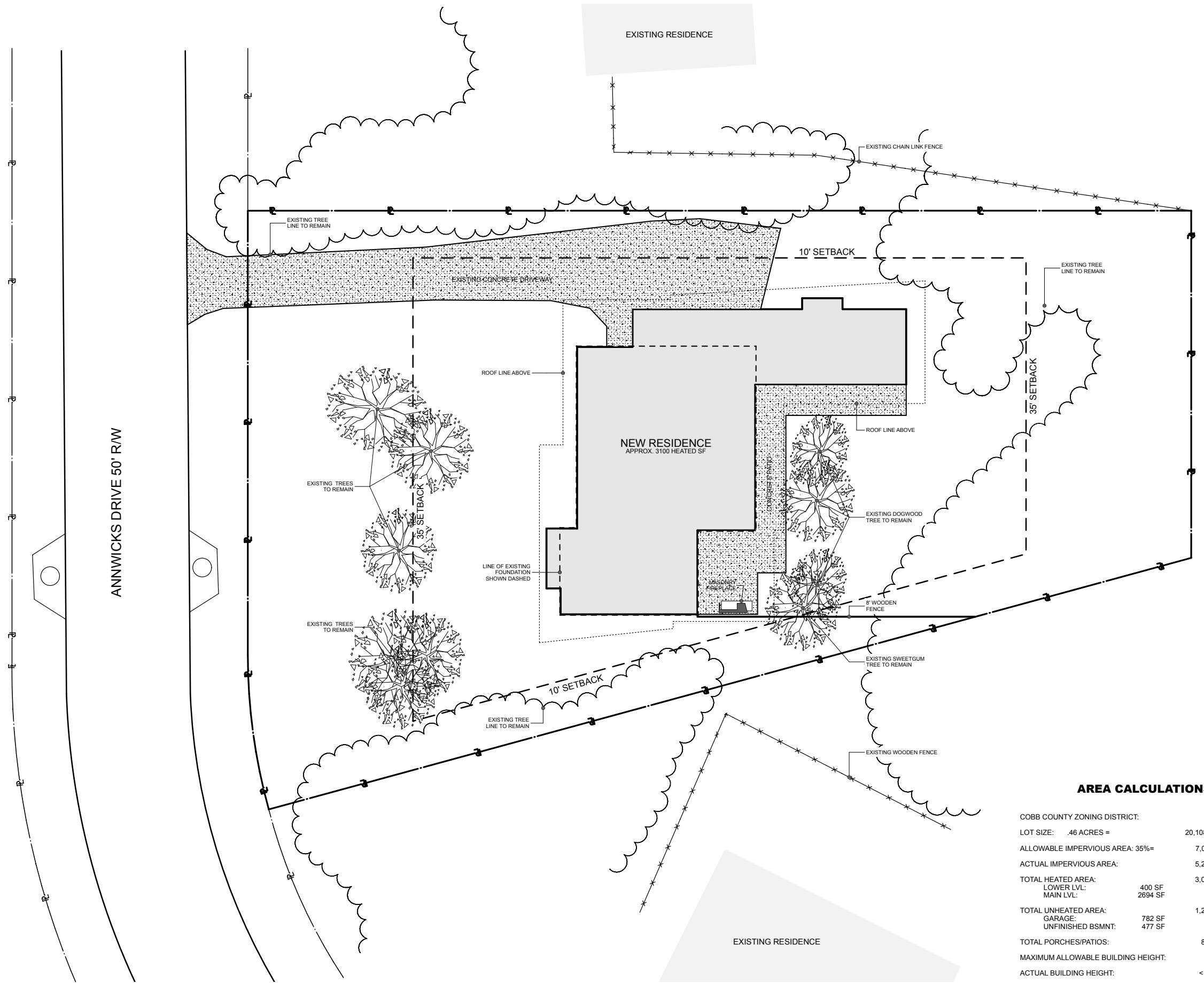
LOT 3 BLOCK "F" OF:
WICKS LAKE SUBDIVISION-UNIT TWO
LAND LOT 765
DISTRICT 16TH - SECTION 2ND
COBB COUNTY, GEORGIA

08/29/08	PROGRESS SET
08/05/08	WICKS LAKE SUBMITTAL
DATE	DESCRIPTION

COPYRIGHT

SHEET TITLE
SITE PLAN

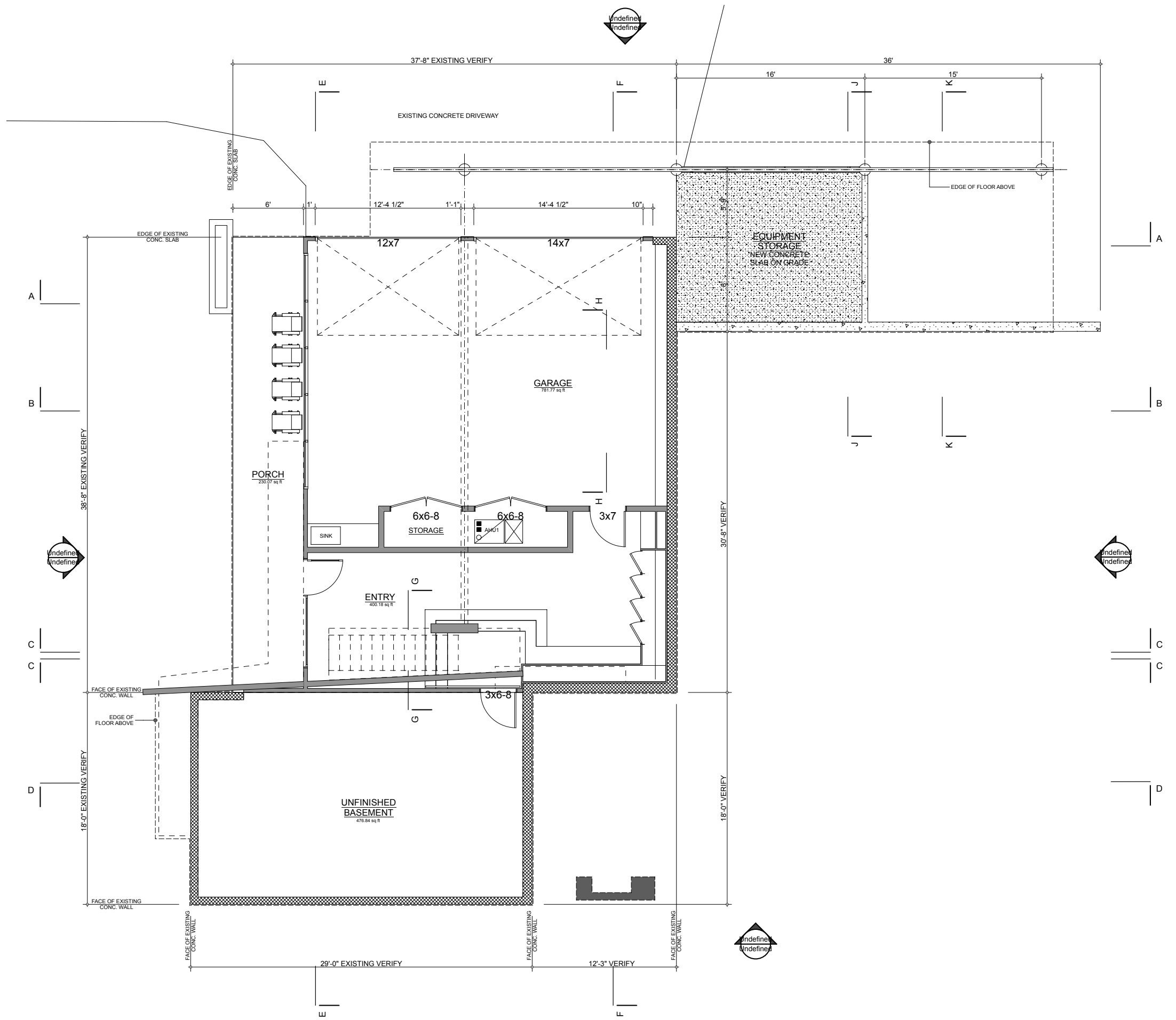
L100



AREA CALCULATIONS

COBB COUNTY ZONING DISTRICT:	R-20
LOT SIZE: .46 ACRES =	20,108.7 SF
ALLOWABLE IMPERVIOUS AREA: 35%=	7,038 SF
ACTUAL IMPERVIOUS AREA:	5,223 SF
TOTAL HEATED AREA:	3,094 SF
LOWER LVL:	400 SF
MAIN LVL:	2694 SF
TOTAL UNHEATED AREA:	1,259 SF
GARAGE:	782 SF
UNFINISHED BSMNT:	477 SF
TOTAL PORCHES/PATIOS:	880 SF
MAXIMUM ALLOWABLE BUILDING HEIGHT:	35 FT
ACTUAL BUILDING HEIGHT:	< 26 FT

SITE PLAN
SCALE: 1" = 10'



CONSULTANTS

NOT RELEASED FOR CONSTRUCTION

1920 ANNWICKS DR.
Marietta, GA 30062

LOT 3 BLOCK "F" OF:
WICKS LAKE SUBDIVISION-UNIT TWO
LAND LOT 765
DISTRICT 16TH - SECTION 2ND
COBB COUNTY, GEORGIA

DATE	DESCRIPTION
08/29/08	PROGRESS SET
08/05/08	WICKS LAKE SUBMITTAL

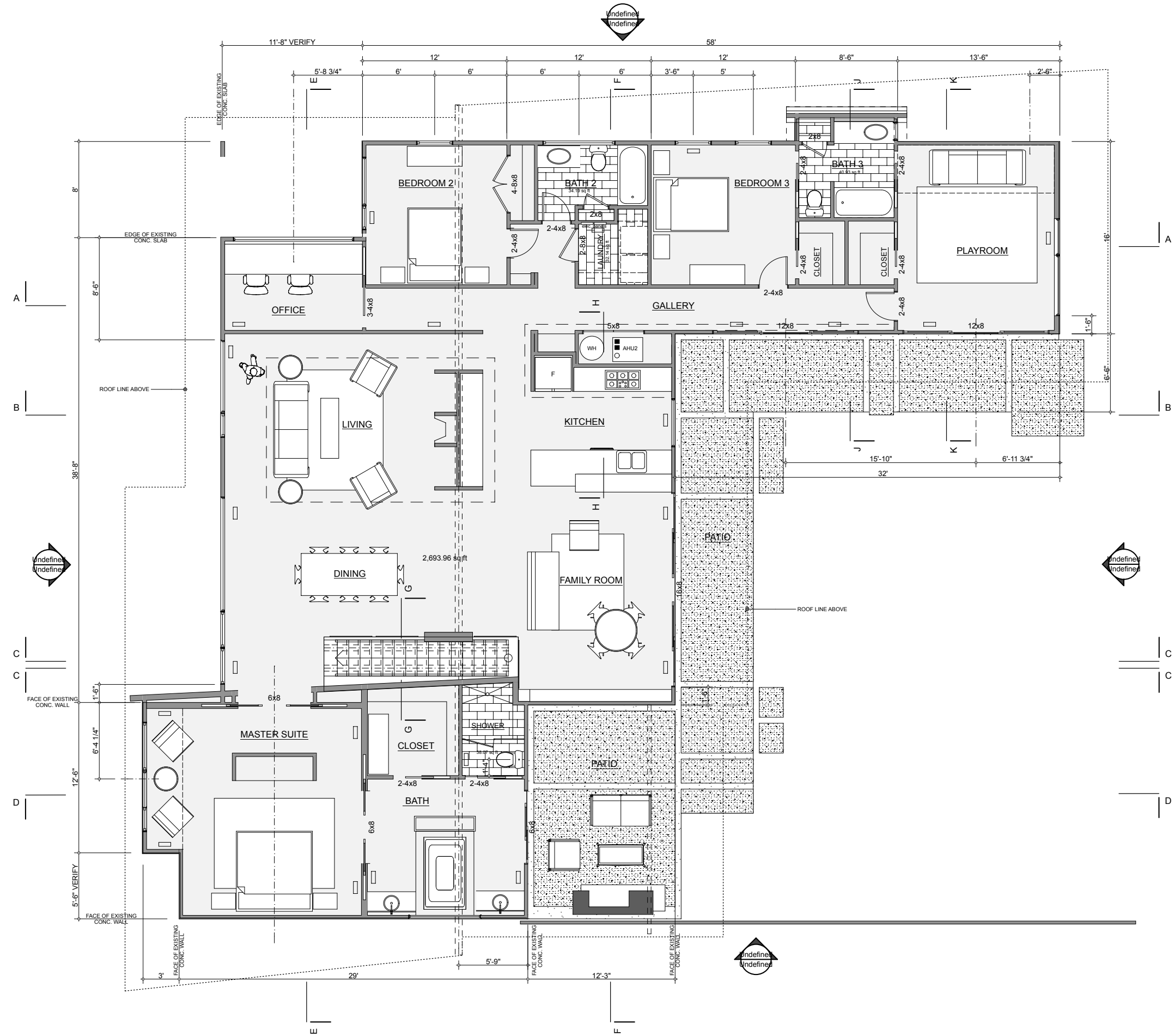
COPYRIGHT

SHEET TITLE
LOWER LEVEL PLAN

A101

1 LOWER LEVEL PLAN
SCALE: 1/4" = 1'-0"





CONTEXT : design-develop-construct

CONSULTANTS

NOT RELEASED FOR CONSTRUCTION

1920 ANNWICKS DR.
Marietta, GA 30062

LOT 3 BLOCK "F" OF:
WICKS LAKE SUBDIVISION-UNIT TWO
LAND LOT 765
DISTRICT 16TH - SECTION 2ND
COBB COUNTY, GEORGIA

08/29/08	PROGRESS SET
08/05/08	WICKS LAKE SUBMITTAL
DATE	DESCRIPTION

COPYRIGHT

SHEET TITLE
MAIN LEVEL PLAN

A102

2. MAIN LEVEL
SCALE: 1/4" = 1'-0"

